

# Classic Cars & Antique Tractors

# AUCTION

TIMED ONLINE



**OPENS August 27 CLOSSES: THURSDAY, SEPTEMBER 3 | 10AM 2020**

**LOCATION:** 1017 State Hwy 9, Campbell, MN 56522

**PREVIEW:** Thursday, August 27 – Thursday, September 3 from 10AM – 3PM

**LOADOUT:** Removal is one week from auction date. For loadout, contact Tedd Steenbock, 218.849.2060

## CLASSIC CARS

- 1967 Dodge Charger, 318 V8, automatic, floor shift, factory A/C, bucket seats, 76,000 miles
- 1979 Corvette L82 T-top, 350, automatic, oyster leather, factory A/C, 411 rears, 18,000 actual miles, New tires w/original Mag wheels
- 1980 Chrysler Cordoba, 2-door, 318 V8, automatic, factory air, Landau top, 35,128 miles
- 1984 Mercedes Benz 190E, 4-door, 4 cyl., automatic, sunroof, leather, air, 157,000 miles
- 1988 Jaguar XJS, 2-door convertible, V12, soft top, 30,000 miles
- 1992 Ford Mustang LX convertible, automatic, 4 cyl., 62,000 miles
- 1992 Chrysler LeBaron, 2-door convertible, V6, automatic, AC, 295,000 miles
- 1992 Cadillac Deville Sedan, 4-door, Gold pkg., V8, automatic, leather, 84,000 miles
- 1992 Volkswagen Beetle convertible Super Beetle, fuel injected, soft top, 4 spd., New tires, 66,000 miles
- (2) 1993 Cadillac Allante convertibles, 4.6L, V8, automatic, leather, 122,000 miles & 83,000 miles, last model convertible
- 2002 Lincoln Navigator, 4-door, V8, automatic, 4WD, 3rd seat, leather, 198,000 miles
- 2004 Cadillac Escalade EXT, 6.0L, 4WD, automatic, leather, sunroof, 140,000 miles

## ANTIQUE TRACTORS & LOADER

- 1955 John Deere 40, 1 hyd., factory 3 pt., 540 PTO, 11-24 rear tires, New tires all around, S/N76204
- 1940 John Deere 40, wide front, factory 3 pt., 540 PTO, 13-26 rear tires, New tires all around, S/N74262
- 1956 John Deere 420, narrow front, 540 PTO, 13-26 rear tires, New tires all around, S/N91744
- 1958 John Deere 520, wide front, 3 pt., power steering, air stack, 12-38 rear tires, New tires all around, S/N5212834
- 1957 John Deere 520, narrow front, 3 pt., power steering, 12-38 rear tires, S/N5207956
- 1957 John Deere 520, narrow front, 3 pt., power steering, air stack, 12-38 tires, New tires all around
- 1958 John Deere 720, narrow front, 540 PTO, custom paint, 15.5-38 rear tires, New tires all around, S/N7217267
- 1957 John Deere 720, wide front, 540 PTO, 3 pt., New Pony electronics, 16.9-38 rear tires, S/N7200927
- 1956 John Deere 720, standard, 2 hyd., 540 PTO, New OH 62 hp., 15-30 rear tires, S/N7201809
- 1964 John Deere 1010, wide front, factory 3 pt., 540 PTO, 13-26 rear tires, New tires all around, S/N49406
- Ford 8N, 3 spd., 3 pt. 10-28 rear tires
- 1946 John Deere A, 1 hyd., rock shaft, 540 PTO, 12-38 rear tires, S/N564910
- 1950 John Deere AR, 540 PTO, New 14.9-26 rear tires, S/N279344
- 1974 IHC Cub Lo-Boy, compact utility, 540 PTO, 59" deck, 9-24 rear tires, New tires all around
- 1950 John Deere MT, narrow front, 540 PTO, 11-34 rear tires, S/N39610
- 1948 John Deere MT, narrow front, 540 PTO, hyd. lift, New 11-34 tires, S/N17524
- 1948 John Deere MT, wide front, 540 PTO, complete reconditioning, New 9-24 rear tires, S/N16157
- 1947 John Deere MT, narrow front, 540 PTO, hyd. lift, 11-34 rear tires, S/N11298
- 1952 John Deere R, 540 PTO, 16.9-34 tires, S/N12122
- 1951 John Deere R, 540 PTO, 18.4-34 tires, S/N7011
- Great Bend loader, w/PTO pump

## PLOWS & CULTIVATOR

- Massey Ferguson plow, 3x16", 3 pt.
- David Brown plow, 3x16", 3 pt.
- Dearborn plow, 2 bottom, ground lift

## PLOWS & CULTIVATOR

- (2) John Deere plows, 4 bottom, semi-mount, 14" & 16"
- (2) John Deere plows, semi-mount, 4x16"
- IHC plow, semi mount, 4x16", 2 pt.
- John Deere plow, 3 bottom, 3x16", 3 pt.
- (2) John Deere plows, 3 bottom, hyd. lift
- (2) John Deere pull-type plows, 3 bottom & 4 bottom, hyd.
- (2) John Deere plows, 3-bottom, 16"
- IHC plow, 3 bottom, hyd. lift
- John Deere plow, 3 bottom, mech. lift
- Asst. John Deere & IHC plows
- John Deere coil shank cultivator

## TRUCKS & PICKUPS

- 1986 GMC Brigadier, single axle, 671 Detroit, 10 spd. Road Ranger, spring susp., 75,000 actual miles
- 1987 IHC 700, single axle tilt cab, Nissan diesel, 10 spd., 24' roll off bed, wet kit, 10:20 tires, 311,128 miles
- 1997 Ford F350 XLT, ext. cab, one ton, dually, 460 V8, automatic, 2WD, twin fuel tanks, 9' steel bed, 112,195 miles
- 1992 GMC 1500, Z71 pkg., ext. cab, SLE 350 automatic, short box step side, New transmission, newer engine, shows 237,017 miles
- 1989 Chevrolet Silverado 10, short box, step side, 350, automatic, 4WD, AC, 67,000 miles
- 1989 Chevrolet, reg. cab, short box, step side, 350, automatic, 4x4, 168,000 miles
- 1976 Chevrolet Silverado 10, short box, 2WD, 350, automatic, 55,000 miles

## TRAILERS

- Shop-built single axle trailer, 5'x9'
- Shop-built gooseneck trailer, 24', tandem singles
- Truck flatbed, 22'
- Pickup box trailer
- Shop-built lawn & garden trailer

## SPRAYER

- Shop-built sprayer, one ton, 50' booms, 6 cyl., 4 spd., 2WD, 500 gal. tank, John Deere sprayer gas pump, flotation tires

## OTHER EQUIPMENT

- Western snow plow, 7-1/2', w/controls, light pkg.
- Erskine rear snowblower

## RECREATION

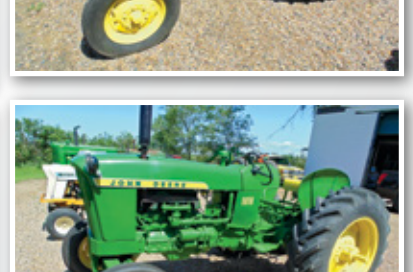
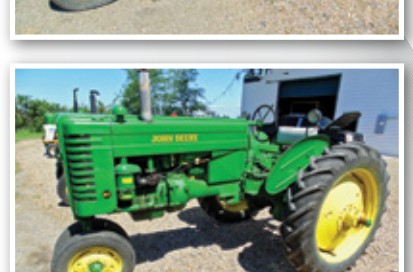
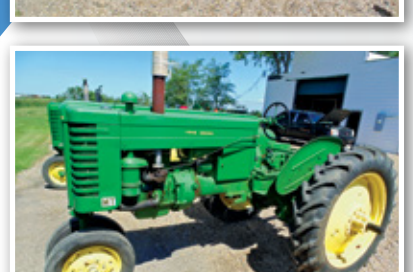
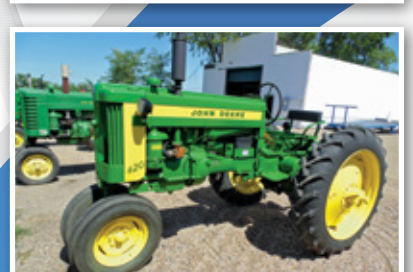
- 1993 Arctic Cat 440 Jag snowmobile, 3,512 miles
- 2002 Honda Shadow 750 motorcycle, chromed, saddle bags, windshield, 5,600 actual miles

## TIRES & PARTS

- John Deere misc. wheels & tires
- Asst. tractor tires & rims, 23.1-30, 18.4-34
- Asst. sets of (4) tires, 14"-22"
- Misc. tires & rims
- Tommy lift
- Step toolbox, rear mount
- Asst. pallets of plow parts & coulters

## FARM SUPPORT ITEMS

- Chicago 6,000 watt generator, 14 hp. Briggs & Stratton
- Generac gas generator, 5,500 watt, 11 hp.
- Coleman 2,800 watt generator
- Electric pallet jack, 12v, no batteries
- 2001 Detroit 12.7L engine, needs OH
- Detroit 6V92 motor, poor, automatic trans., good
- Complete factory 3 pt., for 70/720/730 John Deere, w/elephant ears



**THEODORE STEENBOCK**

Tedd, 218.849.2060

or Brad Olstad at Steffes Group,  
701.237.9173 or 701.238.0240

**SteffesGroup.com**

Steffes Group, Inc., 2000 Main Avenue East, West Fargo, ND 58078 | 701.237.9173



**TERMS:** All items sold as is where is. Payment of cash or check must be made sale day before removal of items. Statements made auction day take precedence over all advertising. \$35 documentation fee applies to all titled vehicles. Titles will be mailed. Canadian buyers need a bank letter of credit to facilitate border transfer.  
Scott Steffes MN14-51, Brad Olstad MN14-70, Max Steffes MN14-031, Justin Ruth MN14-041

